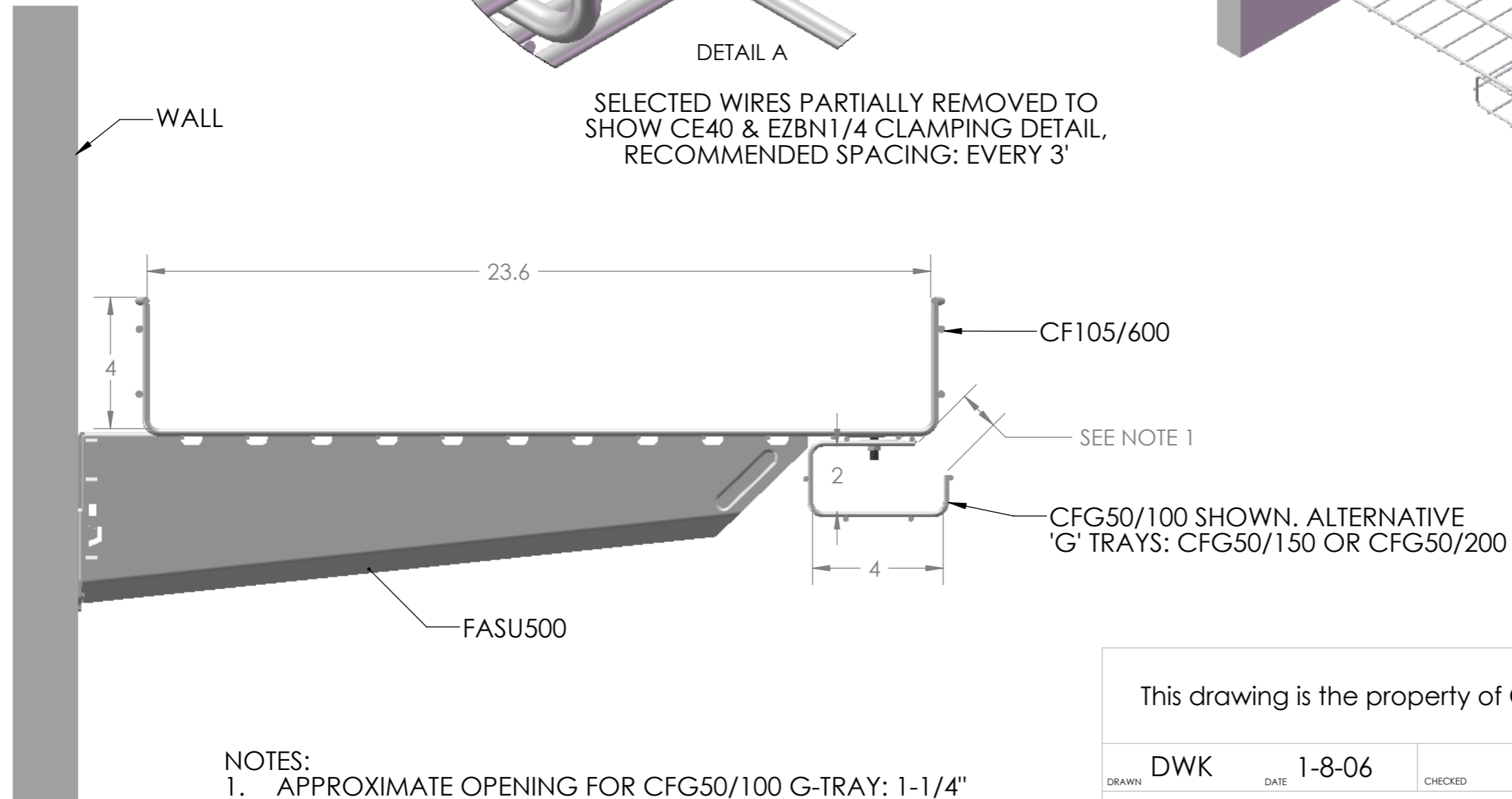
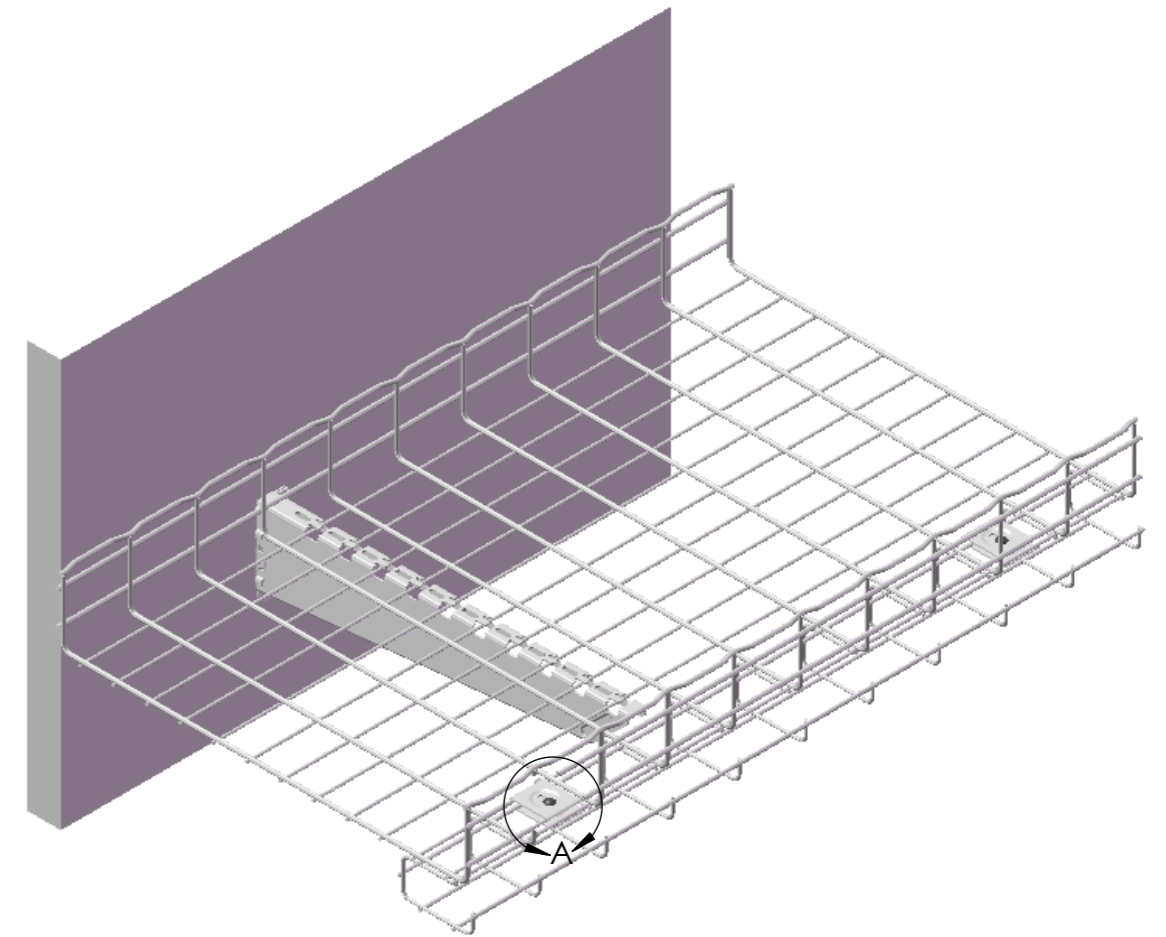


DETAIL A
 SELECTED WIRES PARTIALLY REMOVED TO
 SHOW CE40 & EZBN1/4 CLAMPING DETAIL,
 RECOMMENDED SPACING: EVERY 3'



NOTES:
 1. APPROXIMATE OPENING FOR CFG50/100 G-TRAY: 1-1/4"
 CFG50/150 G-TRAY: 3"
 CFG50/200 G-TRAY: 4-7/8"

This drawing is the property of **CABLOFIL, INC.**

Cannot be copied or transferred to a
 third party without written authorization

| | | | | | | | | |
|-------------------------------------|-----|------|--------|---------|------|-------|------------------------------|--------|
| DRAWN | DWK | DATE | 1-8-06 | CHECKED | DATE | APP'D | DATE | |
| CF105/600 w/CFG50/100 ON FASU500 | | | | | | | CABLOFIL [®] | SCALE: |
| | | | | | | | BP1000 | - |
| | | | | | | | | - |
| | | | | | | | | - |
| | | | | | | | | - |
| | | | | | | | | A |